

my words **transform.**
unlimited potential. endless possibilities.



“I do not get stressed out as
much as I did a few months ago.”

Lindsey, 13—Southside Middle

skills transformed.

transforming programs

Outpatient Services At the core of Child Guidance Center's programs is outpatient counseling. Outpatient counseling consists of individual and family therapy, group therapy, and parental support. This service is available to all children, adolescents, and families who meet clinical criteria. Child Guidance Center operates four Outpatient offices located conveniently throughout Jacksonville and a fifth outpatient office located in Baker County at our Macclenny office.

Psychiatric Services Psychiatric services can be accessed through all programs at Child Guidance Center. Clients are provided the following services: Psychiatric Evaluation and Medication Management.

Case Management Services Targeted Case Managers work with the child and the family to link them with needed behavioral health services, while monitoring and evaluating the services they are receiving. Case Managers act as advocates for the child and family.

Behavioral Health Care Network (BNET)

Provides a coordinated, managed care system for children with special behavioral health needs and no other insurance.

Community Based Services

Community Family Services

Community therapists provide in-home and on-site therapeutic services to children, adolescents and their families having serious emotional problems. Services are provided to children and adolescents involved in the foster care system, as well as in the Duval County Public Schools.

Family Services Planning Team (FSPT) This team, chaired by Child Guidance Center staff, is responsible for coordinating community-based support services for

children who are at risk of losing their current home placement due to behavior attributed to emotional disturbance.

Comprehensive Assessments

Licensed therapists in contracted positions provide Comprehensive Behavioral Health Assessments needed to determine placement and treatment decisions for children involved in the state's dependency care system.

School-Based Counseling Program

School Based Treatment (SBT) Program In-school counseling and educational services are provided to students assigned to the Excel/EBD (Emotional Behavioral Disorder) Program in seven Duval County Public Schools.

Full Service Schools Counseling Individual, family, and group therapy sessions are provided at seven Full Service Schools Counseling and their feeder schools. This program also empowers parents to become actively involved in their child's education and emotional development.

Specialized Family Services

Day Care Consultation (Jacksonville Journey) Provides on-site evaluation of children in subsidized daycare programs in collaboration with the Early Learning Coalition and Jacksonville Children's Commission.

Fetal Alcohol Spectrum Disorder (FASD) This program is funded by a grant from SAMHSA through Northrop Grumman. The Program provides a diagnosis, evaluation, and some intervention services, when necessary, to children in Child Guidance Center programs. The children are evaluated by a Licensed Clinical Social Worker, a Psychologist, an Occupational Therapist, a Speech Pathologist, as needed, and a Geneticist. There is also community education for both front line providers working with at risk families, and professionals.

High Risk Newborn Program

The High Risk Newborn Program serves families with children under 2 who are at risk of abuse or neglect. The services provided include dyadic therapy with the primary caretaker and the child, family therapy, individual therapy, play therapy and case management. The specific services are determined by the family's needs. Services are delivered in the home setting.

Prevention Services Coordinates resources for children and families referred by the Integrated Practices Team of the Department of Children & Families and other community agencies.

Supervised Visitation/Parent Education Provides a safe and nurturing environment for children placed in foster care to visit with their parents and classes to improve parenting.

Rapid Response Team The Rapid Response Team's objective is to reduce the number of children hospitalized through the Baker Act and to ensure follow-up services are provided to the child after the crisis intervention episode. This is an aggressive and focused attempt to reduce the number of children placed under a Baker Act, which requires an evaluation for mental health hospitalization. The Rapid Response Team consists of licensed mental health professionals trained to intervene during critical periods in children's lives when they present a danger to themselves and/or to others. Referrals are accepted from Duval County Public Schools and from Foster Care Hot Lines.

A photograph of two young women sitting at a desk, looking down at papers and writing. The woman on the left has long dark hair and is wearing a black top. The woman on the right has braided hair and is wearing a white top with a dark patterned vest. They are both smiling slightly. The background is a bright, out-of-focus indoor setting.

grades transformed.

“I am happier now and have
straight A’s.”

Rachel, age 15 — Bartram Trail High



The **School Support Services Contract** with DCPS, provides in-class behavioral support to students in the Pre-K VE (varying exceptionalities) and the Elementary BS (Behavioral Support) classes. Licensed therapists spend several hours each week implementing behavioral health strategies within the class activities while continuously assessing students and classroom environments. Techniques are modeled for teachers with the intent this same focus will continue throughout the students' assignments to those academic environments.

"I can go to therapy and not feel like I am being judged or disrespected and I am learning how to work on not being so angry all the time."

Joe, 17 — Terry Parker High School

The **Jacksonville Journey Program** provides mental health services for children who attend targeted child care centers in Health Zone 1 (downtown and northwest Jacksonville). Children are referred by Episcopal Children's Services Intervention Specialists who conduct the initial social-emotional screening. Services can be provided to the child and family either at the child care center or in the home.



new beginnings for 5,042 clients...

BY GENDER

Female	2,036
Male	3,006
Total	5,042*

*unduplicated clients

BY RACE

African American	2,170
American Indian/ Alaskan Native	5
Asian	331
Caucasian	2,165
Hispanic	303
Multi-Racial	32
Native Hawaiian/ Other Pacific	36
Total	5,042

BY AGE GROUP

0-3	381
4-5	380
6-8	1,029
9-12	1,315
13-17	1,467
18-21	174
Over 22	296
Total	5,042

Revenues 2010

Medicaid	\$3,434,342
Family Support Services	\$879,864
State of Florida	\$989,402
Jacksonville Children's Commission	\$840,172
Duval County School Board	\$1,680,906
United Way	\$327,250
Children's Medical Services	\$492,000
Client and Other Fees	\$21,315
Other	\$477,266
Total	\$9,142,517*

*Unaudited financial results for FY10

Expenses 2010

Personnel	\$6,462,424
Building	\$563,630
Professional Services	\$520,790
Travel	\$153,983
Supplies & Equipment	\$250,713
Depreciation	\$58,814
Liability Insurance	\$98,977
Subcontracted Services	\$237,455
Other	\$378,405
Total	\$8,725,091

Primary Diagnosis

Adjustment Disorders	15.41%
Anxiety Disorders	6.61%
Attention-Deficit Disorders	29.10%
Bi-Polar Disorders	2.10%
Depressive Disorders	10.87%
Disruptive Behavior Disorders	22.69%
Other Disorders	5.44%
Post-Traumatic Disorders	6.97%
Psychotic Disorders	.81%
Total:	100.0%

CHILD GUIDANCE CENTER EXECUTIVE STAFF

Dr. Veronica W. Valentine,
President/CEO

Mrs. Jane Chafin
Clinical Director

Mr. Guy Parker,
Chief Financial Officer

Ms. Annette Vajda,
Human Resources Director

Dr. Anna Yumul,
Medical Director

BOARD OF DIRECTORS

Ms. Mary Tappouni,
Chairperson

Ms. Lynn Capaldo,
First Vice Chairperson

Mrs. Paige Johnston,
Second Vice Chairperson

Mrs. Ceceille Poole,
Secretary

Mr. Maury Lazenby,
Treasurer

Mr. Jeffrey Scales,
Immediate Past Chairperson

BOARD MEMBERS

Mrs. Miriam Crowe
The Honorable Judge Henry Davis

Mr. Bruce Jones
Ms. Michelle Leak

Mr. Mark Leininger
Mr. Mike McConvey
Dr. Mercedes McGowan

Mrs. Anne McIntosh
Mrs. Ceceille Poole

Mrs. Joyce Raynor
Dr. Prasanthi Reddy
Mrs. Michele Seymour

Mr. Joseph Strain
Mrs. Meg Zabijaka

FOR MORE INFORMATION OR TO ACCESS SERVICES, PLEASE CALL ONE OF OUR FIVE OUTPATIENT LOCATIONS:

**Arlington/
Beaches** 1100 Cesery Boulevard, Ste 100
Jacksonville, FL 32211 • 745-3070

Baker Co. 92 West Lowder Street
Macclenny, FL 32063 • 259-1137

Northside 1110 Edgewood Avenue W.
Jacksonville, FL 32208 • 924-1550

Southside 5776 St. Augustine Road
Jacksonville, FL 32207 • 448-4700

Westside 6316 San Juan Avenue, Ste 41
*4595 Lexington Avenue
Jacksonville, FL 32210 • 783-2579

*New Address effective November 1, 2010

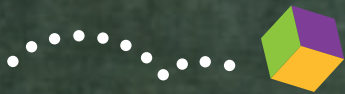
Florida Relay (711) for the hearing impaired



“I want to be good.”

Kevin, age 9—Broach School

families transformed.



childguidancecenter

unlimited potential. endless possibilities.

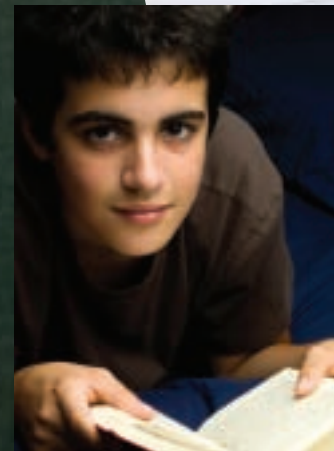
3175 St. Augustine Road, Jacksonville, FL 32207

F: 904.448.4700 • F: 904.448.4718

Tel. Device for the Deaf (TDD) 904.448.4718

**"I AM PAYING
MORE ATTENTION
IN SCHOOL."**

Kimberly, 12 — Gamble Rogers Middle



*"Full Service School
has helped me feel
better about talking
about my situation
at home and
expressing feelings
more appropriately."*

Marvin, age 14 — Paxon Middle School

Clients have the right to treatment without regard to sex, race, color, national origin, religion, spiritual beliefs, handicaps, language or economic status.

Child Guidance Center is a 501(c)3 organization designated by the Internal Revenue Service as a non-profit organization. Child Guidance Center is registered with the State of Florida under the Solicitation of Contributions Act. A copy of the official registration and financial information may be obtained from the Division of Consumer Services by calling toll-free at 1.800.435.7352. Registration does not imply endorsement, approval or recommendation by the state. Child Guidance Center does not employ commissioned fundraisers. CH-567.

